

OIL LEVEL INDICATOR

MODEL: SO-HE-10-M-ATMS

1.0 APPLICATION:

This indicator is suitable for oil filled Power Transformers & oil filled tanks having Aircell (Flexi Separator)

2.0 CONSTRUCTION & WORKING:

The indicator has cast aluminum body with built-in flange. To avoid leakage of oil and to avoid entry of contaminated moist air in conservator, a pair of permanent magnets is used for the operation of indicator separated by a metallic wall. A roller type float is used as sensor of level and it is connected to driving magnet through a bevel gear.

Float, driving magnet and bevel gear remain in oil inside the conservator. The driven magnet is positioned outside in air in the housing. The driven magnet carries a cam and a pointer. The cam is set to operate the switch near empty level and the pointer is set to read the level inside the conservator.

(see schematic fig.1).

In this model, the dial body can be separated from the base by loosening 6 screws to have access to the switch. For this model a float arm suitable for specified diameter of conservator is supplied. It is not possible to supply adjustable length type float arm for this model. The leads from the switch are brought out in a separate terminal box at the bottom of indicator with a removable cover. Terminal box is provided with a hole with 3/4" BSC threads for cable gland.

3.0 SPECIFICATIONS:

Liquid In Tank : Transformer Oil - IS-335

Specifications

Temperature	: -30° to 100°C of Oil.
Pressure	: 0 to 1 Kg/Cm ²
Environment	: Indoor or Outdoor.
Ingress Protection	: IP-65
Corrosion Resistance	: C4-M

Mounting : The buyer is required to provide the mounting flange as per Fig.2

Calibration

- Dial Size : Ø 250mm Nominal
- Unit : Any unit is possible as per Customers Req.
- Dial Colour : Black marking on yellow OR white background OR any other special marking is possible.
- Spread : Max 240° (See Fig:4 For 150° Marking)

Float (Sensor) and Arm

- Float : Synthetic
- Float Arm : Brass

Float arm Travel: 70° Max. (See Fig.3)

Margin

Leave 100mm beyond Lower limit and 150mm above Higher limit for clearance (See Fig.3)

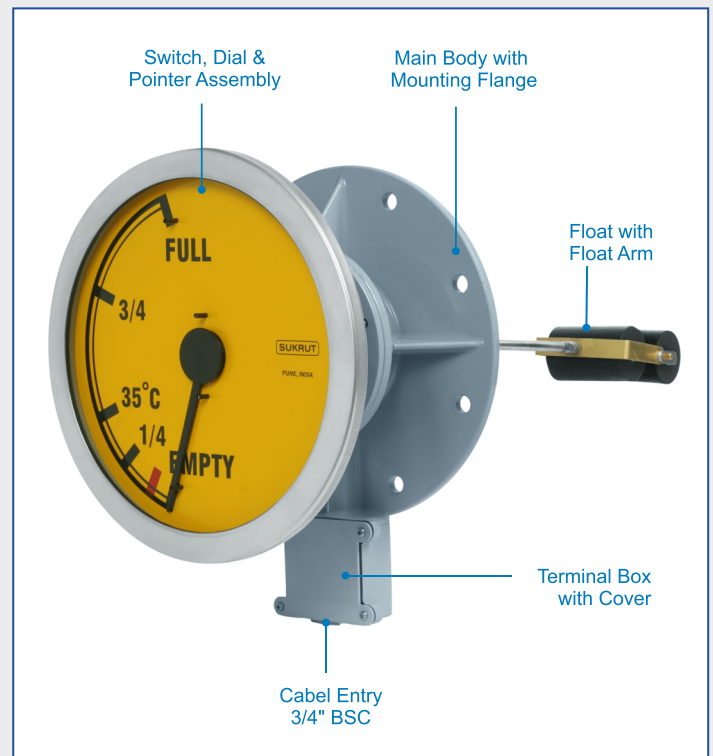
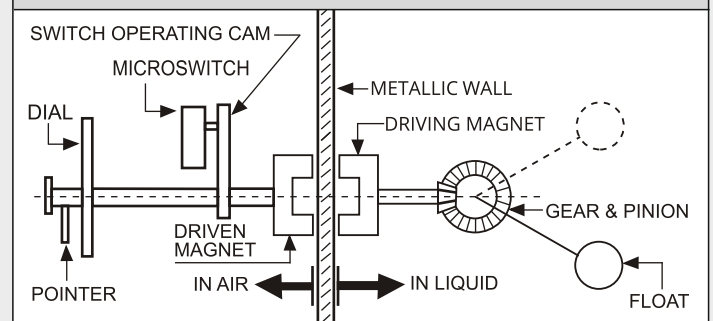


FIG. 1 SCHEMATIC



Switch

- Type : Micro Switches
- Contact Rating: 5A, 240V AC & 0.25A 240V DC
- Operation : Refer wiring diagram at Fig.5

4.0 ROUTINE TESTS

Each indicator is tested for

1. Specified levels.
2. Switch operation
3. HV Test
4. Leakage Test.

A combined test certificate is issued for each batch.

5.0 HOW TO ORDER

We provide a Questionnaire for specifying your requirements. However, a drawing is acceptable giving all specifications.

