



Global technology for local needs



**DISTRIBUTION
TRANSFORMERS
ACCESSORIES**

SUKRUT, being an ISO 9001 : 2015 certified company, is a leading manufacturer of transformer accessories in INDIA. SUKRUT believes in rigorous testing of its products before delivering those to its customer's.

- ✓ We are India's first accessories market company to receive an approval by the National Grid of India.
- ✓ We continuously upgrade our technology and to ensure quality.
- ✓ We conduct multiple levels of type tests in third party laboratories as well

Buchholz Relay

The Buchholz Relay (BR) is a control and safety device which detects abnormal functioning inside a transformer.

1. STANDARD MODEL

- 'BR' series : Buchholz Relay as per Indian standards.
- 'EE' series : Buchholz Relay as per European standards.

2. MOUNTING (PIPE SIZE)

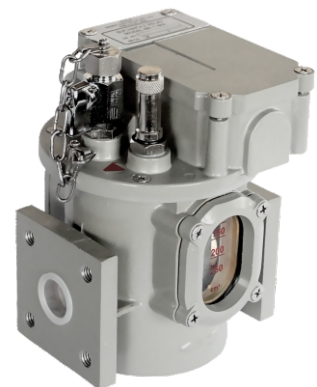
- Suitable for 25 mm (1") NB pipe
- Suitable for 50 mm (2") NB pipe

3. CALIBRATION

- Alarm switch: Gas Volume Range
- Trip Switch: Steady Flow of Oil

4. GENERAL INFO:

- Ingress protection is IP-67 & corrosion class is C4-M & C5-M.
- Every Buchholz Relay is calibrated at factory.
- Setting cannot be altered at site.



5. CONTACT TYPE:

MA	1 Alarm +1 Trip (Normally Open)
MG	1 Alarm +2 Trips (Normally Open)
ML	1 Alarm +1 Trip with changeover contacts
MD	1 Alarm +1 Trip (Normally Closed)

Oil Level Indicator

Oil Level Indicator (OLI) is a magnetic analogue device used to indicate the position of insulating oil level in conservator of a transformer.

1. CONSERVATOR : With or without Aircel.

2. MOUNTING

- Mounting on flat end plate cover or on circular wall of conservator
- Vertical or inclined
- Customer has to provide mounting pad on the conservator to suite the selected model

3. DIAL

- Size: Round: 25, 50, 80 & 100mm
- Dial marking: EMPTY, 1/4, 1/2, 3/4, FULL or any special marking
- Dial colour: Black marking on yellow / white background or as per requirement.

4. SWITCH

- With or without switch
- 1 or 2 max
- Switch for low oil level
- Switch for low & very low
- Switch for high oil level



5. MOVEMENT OF FLOAT:

- In a plane perpendicular or parallel to dial

6. GENERAL INFO

- Please give all specifications as per your model requirement so that we can offer a suitable model
- OLI with different specifications are not interchangeable
- Protection class is IP-67
- Corrosion Class is C4-M & C5-M



Terminal Box

Terminal Box (TBX) is meant for connecting internal circuits with the external circuits in an oil-filled transformer.

1. MODELS & NUMBER OF TERMINALS

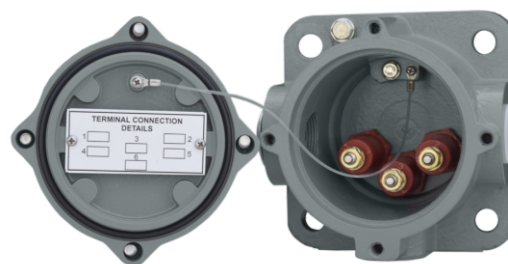
Model	No. of terminals
SM2-XS	2, 3, 5

2. NUMBER OF EXITS & CABEL ENTRY SIZE

Model	No. of exits	Cable Entry Size
SM2-XS	2	M25 x 1.5

3. WORKING CONDITIONS

- -10°C to + 115°C
- -40°C to + 115°C



4. SPARES & ACCESSORIES (AT EXTRA COST)

- Cable Gland (2 Core / 4 Core)
- Shorting Links
- Bottom Gasket

5. GENERAL INFO

- Protection Class is IP-67
- Corrosion Class is C4-M & C5-M

Porcelain Bushing

A transformer bushing is an insulating structure that facilitates the passage of an energized, current-carrying conductor through the grounded tank of the transformer.

S/N	BUSHINGS	
1	Maximum rated voltage	From 1 kV up to 12 kV
2	Maximum rated current	From 250 A up to 4500A
3	Nominal creepage distance	From 60 mm up to 500 mm
4	Standard references	DIN and EN
5	Rod design	Rigid stem / Split conductor / Drawlead / Spade



Pressure Relief Device

PRD is a safety device which allows rapid release of excessive pressure avoiding high oil pressure build up inside the transformer during fault conditions. This device is fitted with an alarm / trip switch.

1. PORT OPENING

- 25, 50 & 70 Nominal diameter

2. OPERATING PRESSURE

- 0.28, 0.35, 0.42, 0.49, 0.56, 0.70, 0.80 kg/cm²

3. SWITCH TYPE

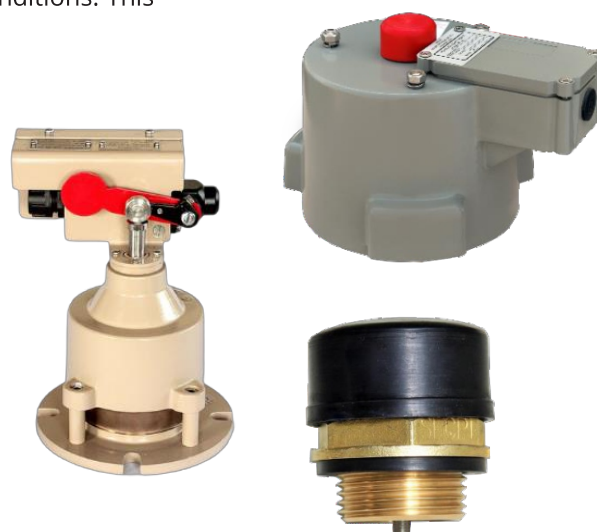
- Limit switch with contacts 1 NO, 2 NO or Changeover.

4. CHANNELIZED DISCHARGE

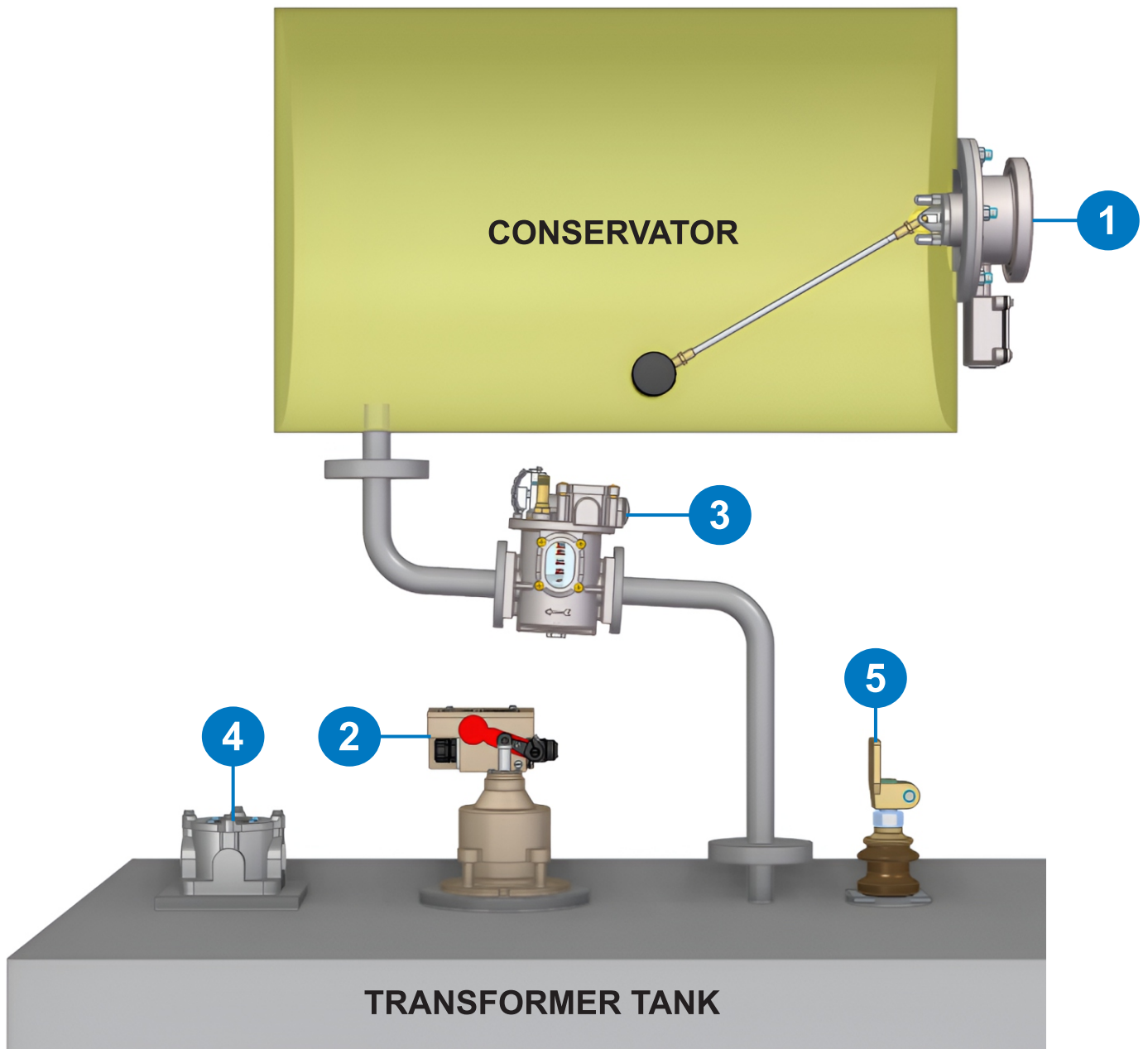
- For oil collection & drain, PRV with shroud can be provided

5. GENERAL INFO

- Protection class is IP-67
- Corrosion Class is C4-M & C5-M
- Operating pressure is not adjustable at site
- With or Without switch option available



All accessories at a glance



1. Oil Level Indicator 2. Pressure Relief Device 3. Buchholz Relay 4. Terminal Box 5. Bushing



Global technology for local needs

SUKRUT ELECTRIC CO. PVT. LTD.

Plot No. Pap-B-63, MIDC Chakan Industrial Area
Phase - II, Village Bhamboli, Taluka Khed District
Pune 410 501, Maharashtra, India.

M : +91 75077 78842, 84110 05427
E : marketing@sukrutelectric.com
W : www.sukrutelectric.com